

# Wheelchair Tote Bags - Sewing Instructions

By Patty Steele

## Cutting Fabric

**NOTE:** the finished size should be 18" wide x 15" tall with 6" straps

**Body & Lining** are cut on the fold / 19" wide x 17" tall  
(fold at bottom)

1 Body on fold
19" wide
17" Tall

1 Lining on fold
19" wide
17" Tall

**Straps** – Cut 2 - 4" to 6" wide x 15" to 16" long / this depends on how you want to assemble.  
making a tube vs fold & sew method. Finished Strap 1 ½" - 2" wide x 15" to 16" long.

*Note: You can make straps any width, as we each have our preference.*

**Note: Wheelchair bags - you can also use Velcro on the straps this enables it to also be used as a Walker tote.**

**Pockets** – Cut 1 pocket / there are two options see pocket instructions for sewing.

Cut options: **Option A** - cut to match width of body / 19" wide x 10" tall

**Option B** – various sizes that will fit on front of the tote bag.

8"x10" / 9"x12" / 10"x10" / etc.

I use this option when I don't have enough fabric to make the pocket the width of the tote. I have even put 2 small pockets on the tote.

**Sewing the Tote:** I sew the pocket and straps and then the body. Then assemble it all together.

*Pockets* – see pocket instructions: also, options on page # 2

*Straps* - See strap instructions: also, for Velcro option on page #3

*Body & Lining* – see instructions on page #4

*Assembly* – page 4 & 5

## Pocket Sewing Instructions:

### *Option A – my preferred method.*

**Fold** under the top  $\frac{1}{4}$ " 2 times / stitch, sometimes I stitch 2 lines for a better hold & decorative.

**Fold** under the bottom  $\frac{1}{4}$ " & pin to the front of tote. / **Stitch** bottom to attach it to the tote

**Stitch** a seam up the middle of the pocket to create 2 pockets (sides will be sewn when sewing the body together)



### *Option B*

**Fold** under  $\frac{1}{4}$ " on the bottom & side edges / stitch to hold in place.

**Fold top** under  $\frac{1}{4}$ " 2 times / stitch, sometimes I stitch 2 lines for a better hold & decorative.

**Pin to front of tote** / stitch down the side, across the bottom and up the other side to attach to the tote. Sometimes I stitch a seam up the middle to create 2 pockets.



## Strap Sewing Instructions:

### **Option Tube:**

Fold fabric right sides together matching long edges.

Stitch along the long edge making a tube.

Turn the tube right side out / flatten with seam in the middle of the straps.

Stitch down about 1/8" or 1/4" on each edge of the long sides of the straps.

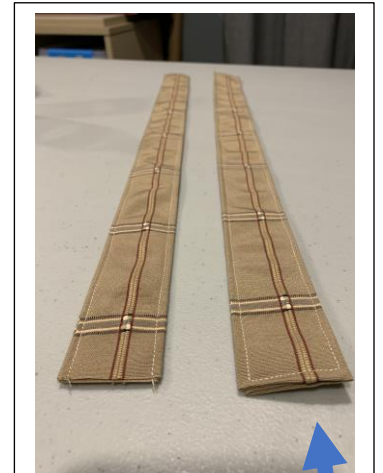
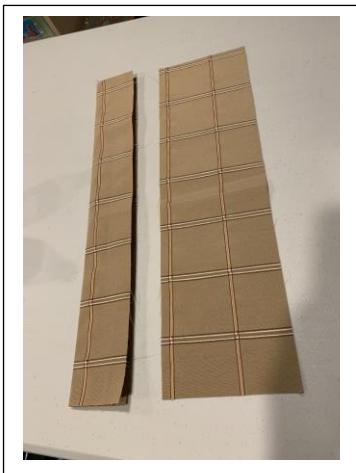


### **Option Fold & Sew: my preferred method.**

Fold fabric in 1/2 wrongs sides together / Fold raw edges into the center fold / Fold in 1/2

Stitch down about 1/8" or 1/4" on each edge of the long sides of the straps.

**NOTE: Wheelchair bags with Velcro option is to finish 1 short edge to add Velcro so the bag can also be used on a walker tote.**



Short edges will have raw edges since they will be in between tote and lining except –

Wheelchair option / Finished edge for Velcro

### **Option with Velcro:**

Tube option - Fold 1/4" on short side of one edge / stitch close to edge

Fold & Sew option – Fold 1/4" on short side of 1 edge.

Fold remaining folds & stitch close to the edge on 3 sides (2 long & 1 short).

**Body & Lining** prep – Fold rights sides together

Stitch side seams together (making sure to get the pockets in the seam for options A)



**Assembling it all together:**

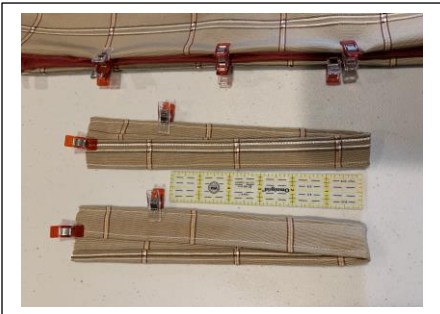
Turn tote right side out

Put lining inside of tote / wrong side sides together on the inside of tote

Fold down top of tote about 1”

Fold down top of lining about 1”

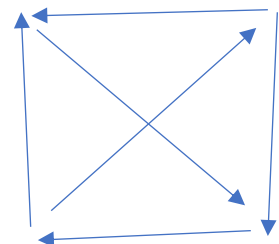
Pin or clip matching side seams and edges.



Mark straps 6” from the fold end / insert between the tote and the lining on the side seam. I usually spread the handles apart so it’s not so much bulk when sewing side seams.

Stitch around the top edge of the tote catching each strap as you go.

Stitch each strap with a box & X in the box – this gives added strength.



## Assembling it all together: Velcro Option

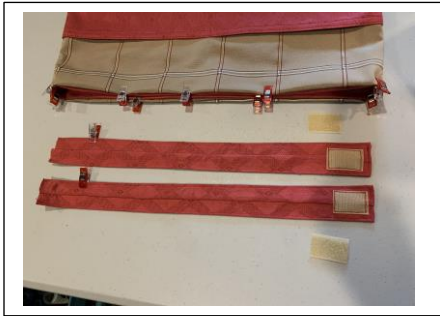
Turn tote right side out

Put lining inside of tote / wrong side sides together on the inside of tote

Fold down top of tote about 1"

Fold down top of lining about 1"

Pin or clip matching side seams and edges.



Sew Velcro to the finished edge of the strap. (1" Velcro – cut 1 ½" long / you can vary this depending on your strap)

Mark straps 6" from the fold end / insert raw edge between the tote and the lining as close to the side seam as possible. (This allows it to reach wheelchair handles without having to sew over the bulk of the side seams).

**Note: End length of strap should be 6" – if further from the side seams you can make them a little longer to ensure they will reach the wheelchair handles.**

Stitch around the top edge of the tote catching each strap as you go.

Stitch each strap with a box & X in the box – this gives added strength.

Line up the strap on the back of tote for Velcro placement.

Sew Velcro to the back of the Wheelchair tote.

Attach Velcro on strap to Velcro on back of the tote.

