

# Ladies Tote Bags - Sewing Instructions

## Cutting Fabric

**Body & Lining** are cut on the fold / 17" wide x 20" tall

1 Body on  
fold

17" wide

20" Tall

1 Lining  
on fold

17" wide

20" Tall

**Straps** – Cut 2 / 4" to 6" wide x 38" long / this depends on how you want to assemble.

making a tube vs fold & sew method. Finished Strap 1" – 2 ½" wide x 38" long.

*Note: You can make straps any length & width you like, as we each have our preference.*

**Pockets** – Cut 1 pocket / there are two options see pocket instructions for sewing.

**Option A** - cut to match width of body / 17" wide x 10" tall

**Option B** – various sizes that will fit on front of the tote bag.

8"x10" / 9"x12" / 10"x10" / etc.

I use this option when I don't have enough fabric to make the pocket the width of the tote. I have even put 2 small pockets on the tote.

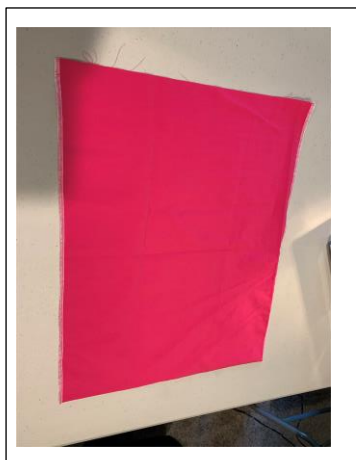
**Sewing the Tote:** I sew the pocket and straps first and then the body. Then assemble it all together.

*Straps* - See strap instructions:

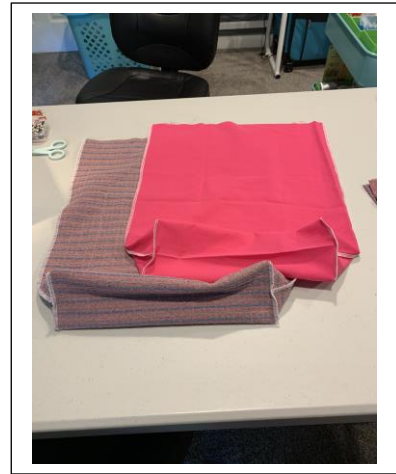
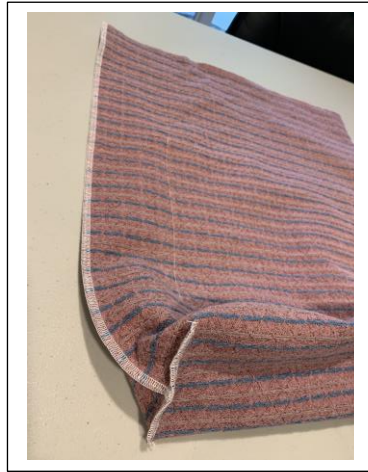
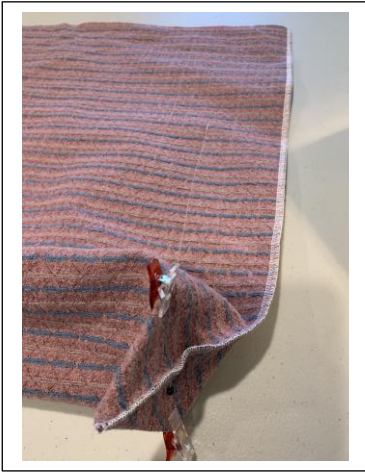
*Pockets* – see pocket instructions:

*Body & Lining* – Fold rights sides together

Stitch side seams together (making sure to get the pockets in the seam for options A)



Make a box pleat on each bottom corner (2 body & 2 lining) / match side seam to bottom fold and stitch across fold 1" – 2".



### Assembling it all together:

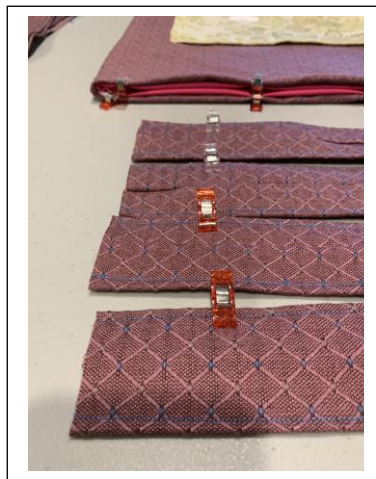
Turn tote right side out

Put lining inside of tote / wrong sides together on the inside of tote

Fold down top of tote about 1"

Fold down top of lining about 1"

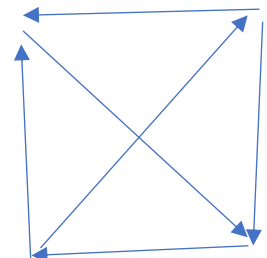
Pin or clip matching side seams and edges.



Mark straps 2" from the ends / insert between the tote and the lining to the mark and about 1" from the side seams.

Stitch around the top edge of the tote catching each strap as you go.

Stitch each strap with a box & X in the box – this gives added strength.



## Pocket Sewing Instructions:

### *Option A*

Fold under the top  $\frac{1}{4}$ " 2 times / stitch, sometimes I stitch 2 lines for a better hold & decorative.

Fold under the bottom  $\frac{1}{4}$ " & pin to the front of tote. / stitch bottom to attach it to the tote

Stitch a seam up the middle of the pocket to create 2 pockets (sides will be sewn when sewing the body together)



### *Option B*

Fold under  $\frac{1}{4}$ " on the bottom & side edges / stitch to hold in place

Fold top under  $\frac{1}{4}$ " 2 times / stitch, sometimes I stitch 2 lines for a better hold & decorative.

Pin to front of tote / stitch down the side, across the bottom and up the other side to attach to the tote.





## Strap Sewing Instructions:

### ***Option Tube:***

Fold fabric right sides together matching long edges.

Stitch along the long edge making a tube.

Turn the tube right side out / flatten with seam in the middle of the straps.

Stitch down about 1/8" or 1/4" on each edge of the long sides of the straps.

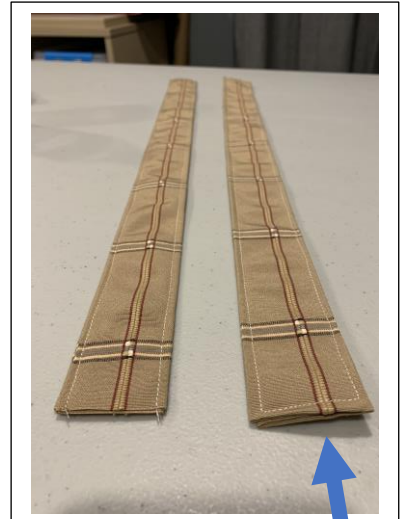
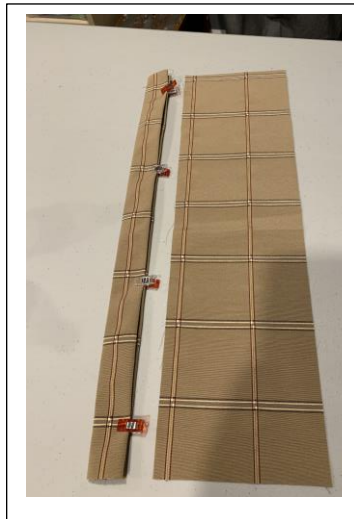


### ***Option Fold & Sew:***

Fold fabric in 1/2 wrongs sides together / Fold raw edges into the center fold / Fold in 1/2

Stitch down about 1/8" or 1/4" on each edge of the long sides of the straps.

**NOTE: Wheelchair bags option is to finish 1 short edge to add Velcro so the bag can also be used as a walker tote.**



Short edges will have raw edges since they will be in between tote and lining except  
Wheelchair option

Finished edge for Velcro